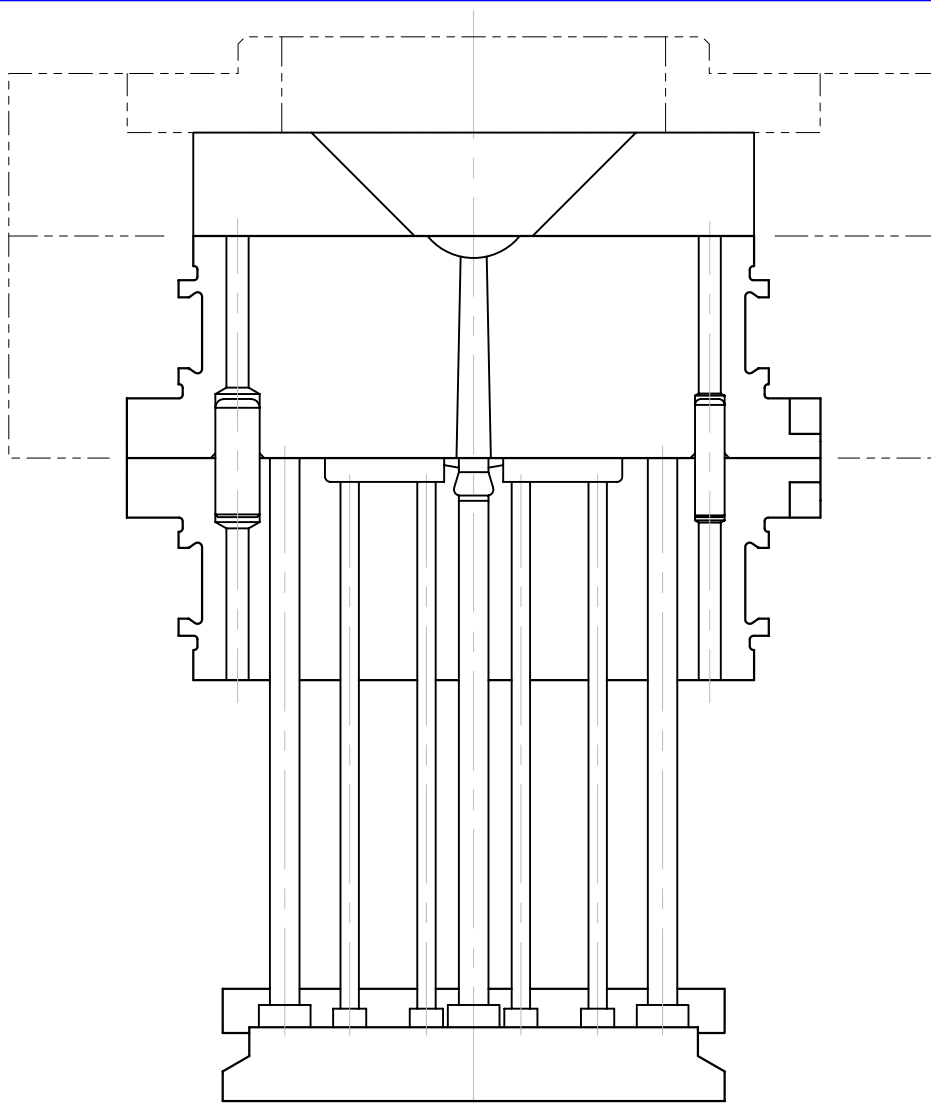


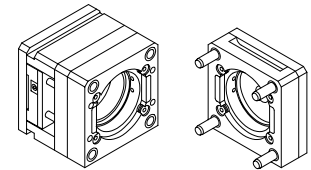
CENTER SPRUE IS THE
TRADITIONAL METHOD FOR
DELIVERING THE PLASTIC
TO THE PARTING LINE.

COPYRIGHT © PLEASANT PRECISION, INC.®
1991, 1993, 1997, 1998, 1999, 2000 ALL RIGHTS RESERVED

CENTER SPRUE



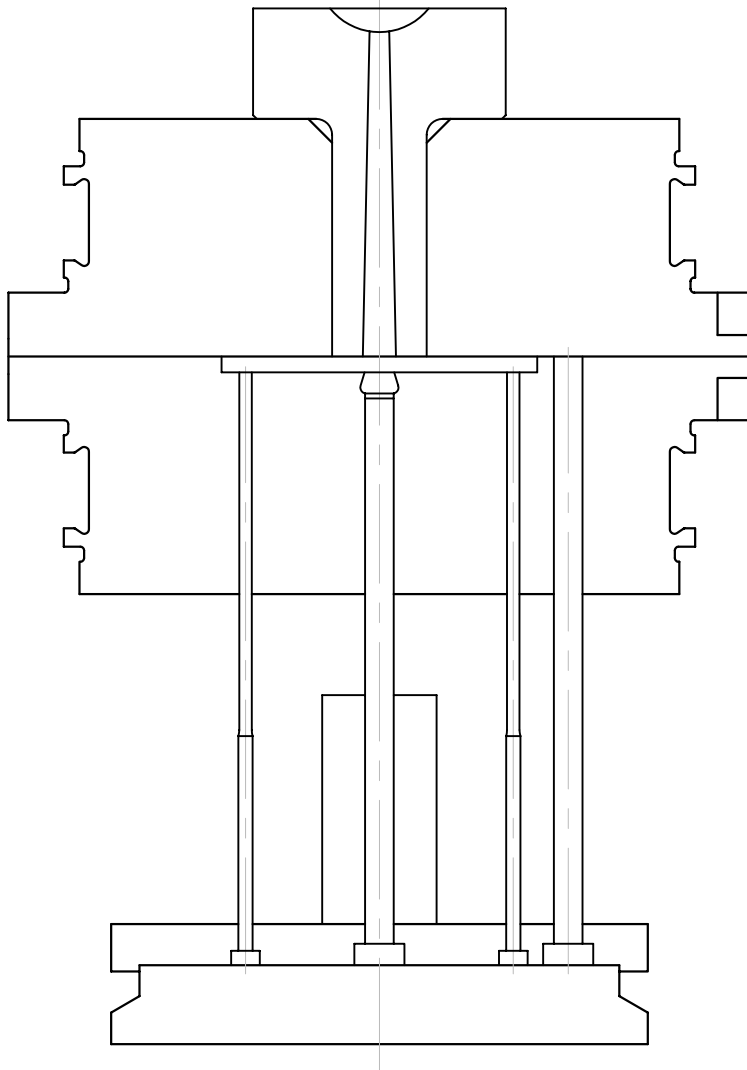
USING AN EXTENDED NOZZLE
ON THE MOLDING PRESS
ALLOWS FOR SHORTENING
OF THE SPRUE. THE NOZZLE
RADIUS IS MACHINED
DIRECTLY INTO THE ROUND
MATE[®] INSERT.



SINGLE-POSITION

COPYRIGHT © PLEASANT PRECISION, INC.®
1991, 1993, 1997, 1998, 1999, 2000 ALL RIGHTS RESERVED

EXTENDED NOZZLE
CENTER SPRUE

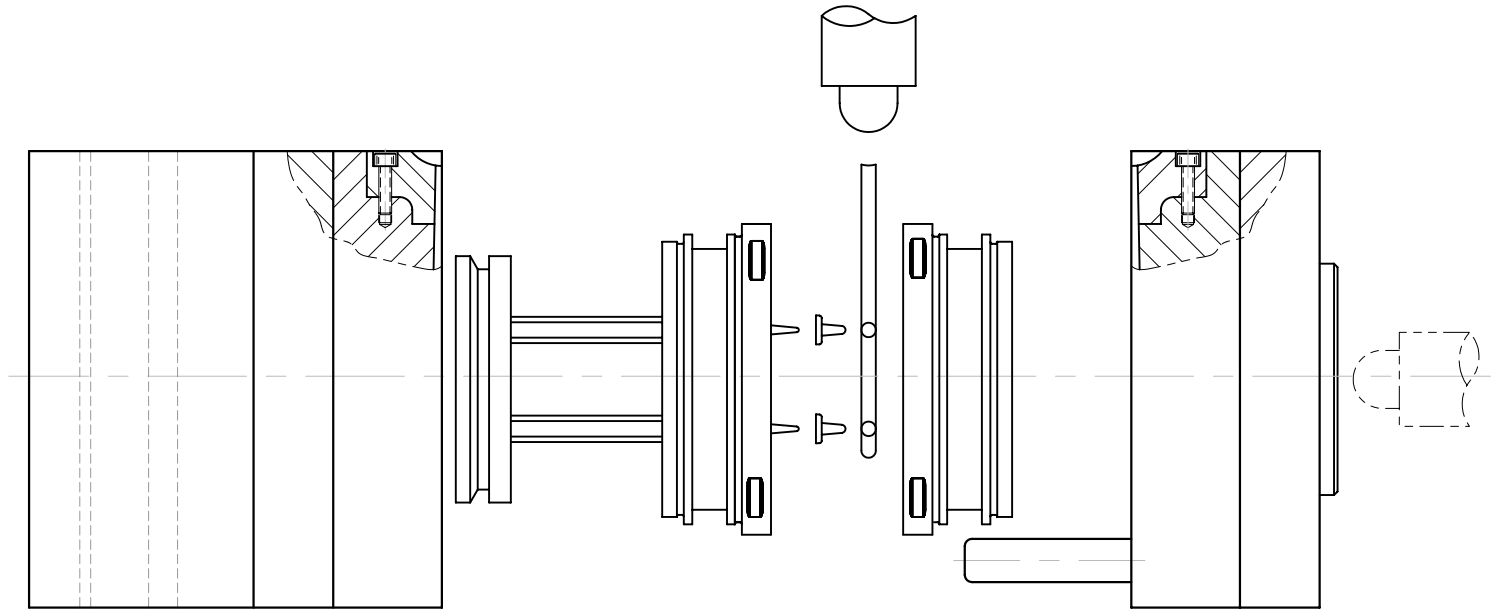


STANDARD SPRUE
BUSHINGS CAN BE
INSTALLED IN THE
ROUND MATE[®] INSERT.

COPYRIGHT © PLEASANT PRECISION, INC.[®]
1991, 1993, 1997, 1998, 1999, 2000 ALL RIGHTS RESERVED

STANDARD SPRUE
BUSHING

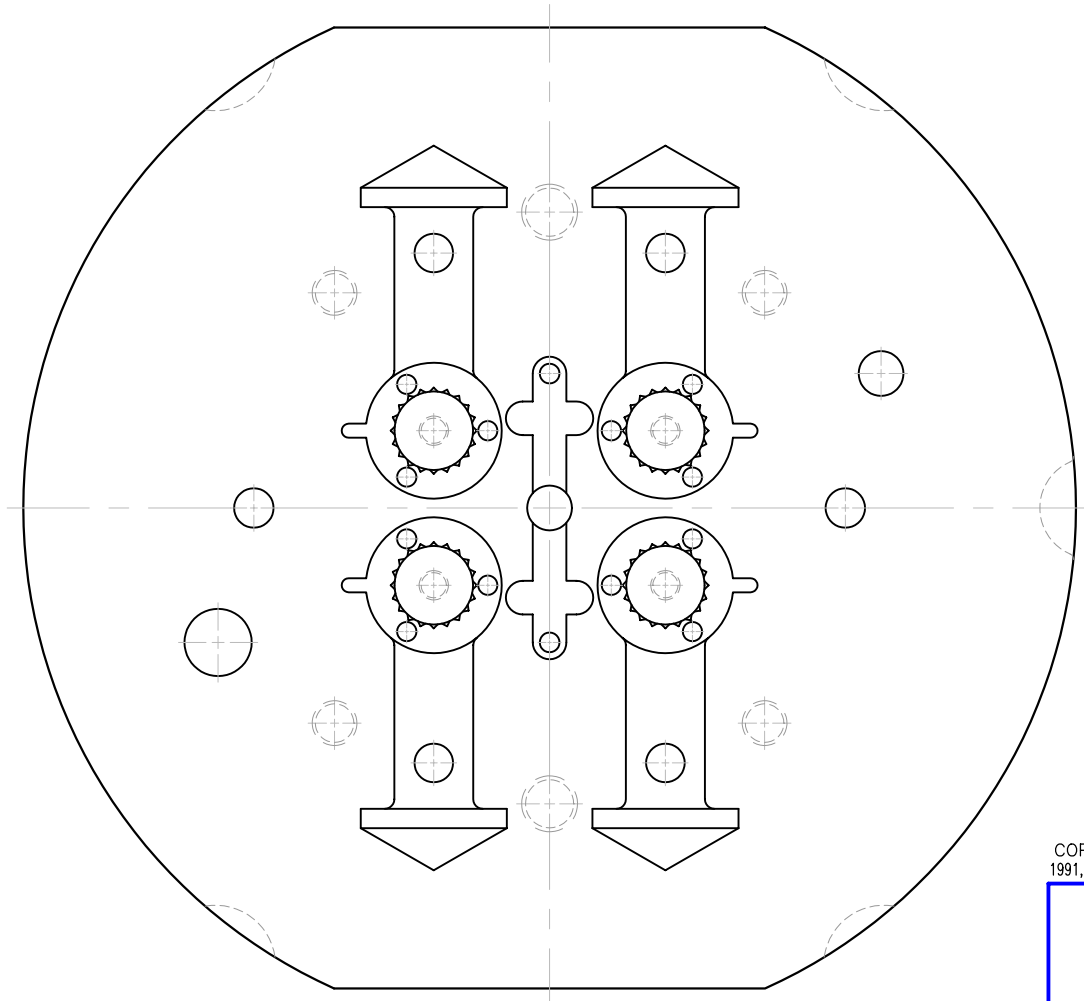
ON CERTAIN MOLDING
MACHINES, THE INJECTION
BARREL CAN BE MOVED TO
A VERTICAL POSITION.
THIS OPTION CAN BE ADDED
TO THE SINGLE POSITION
MASTER FRAME.



COPYRIGHT © PLEASANT PRECISION, INC.®
1991, 1993, 1997, 1998, 1999, 2000 ALL RIGHTS RESERVED

OPTIONAL
PARTING LINE RUNNER

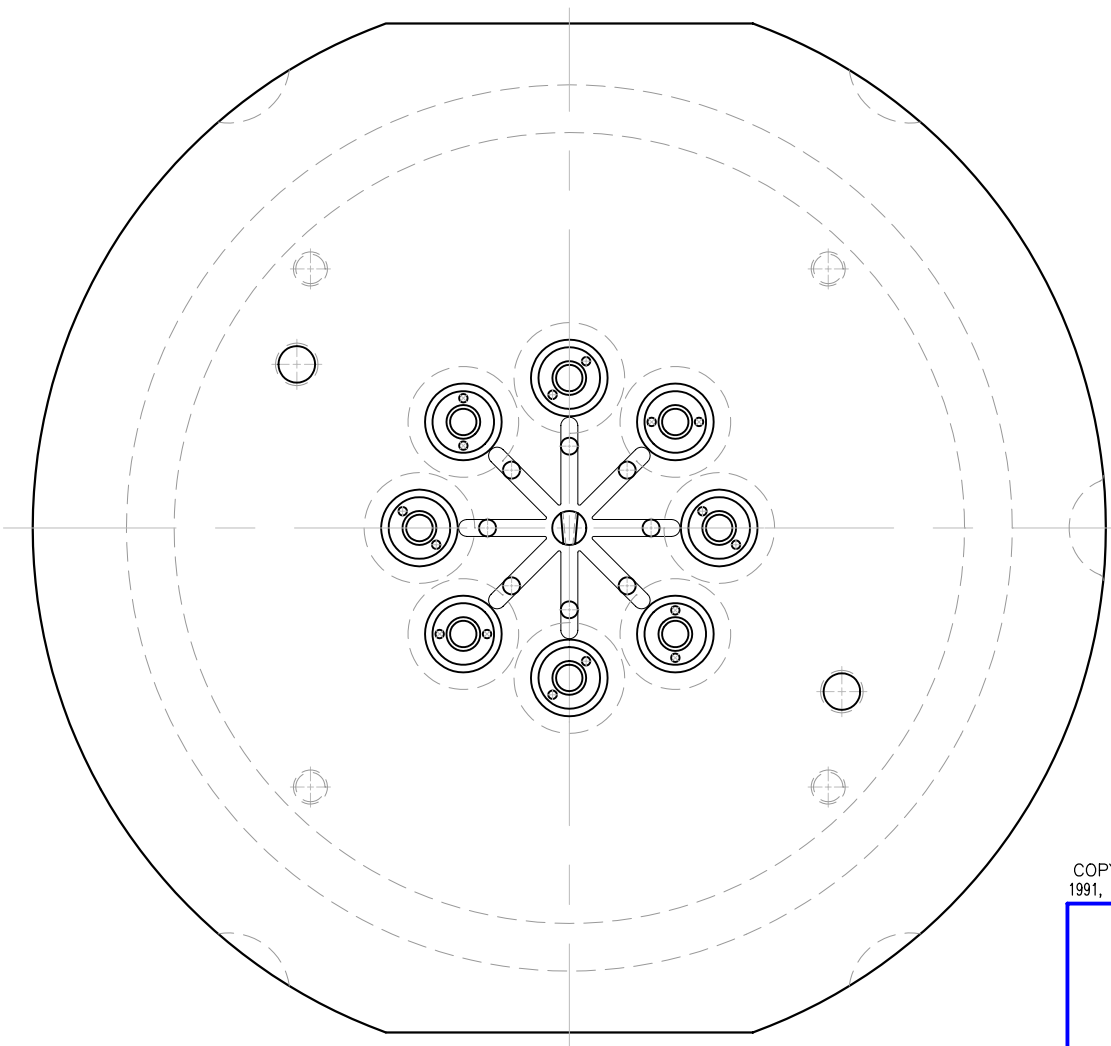
RUNNER LAYOUT IS THE
BASIC RESULT OF CAVITY
QUANTITY AND LOCATION.
THE ROUND MATE® HAS A
NATURAL TENDENCY TO
PROMOTE A BALANCED
RUNNER SYSTEM.



COPYRIGHT © PLEASANT PRECISION, INC.®
1991, 1993, 1997, 1998, 1999, 2000 ALL RIGHTS RESERVED

"H" PATTERN
RUNNER LAYOUT

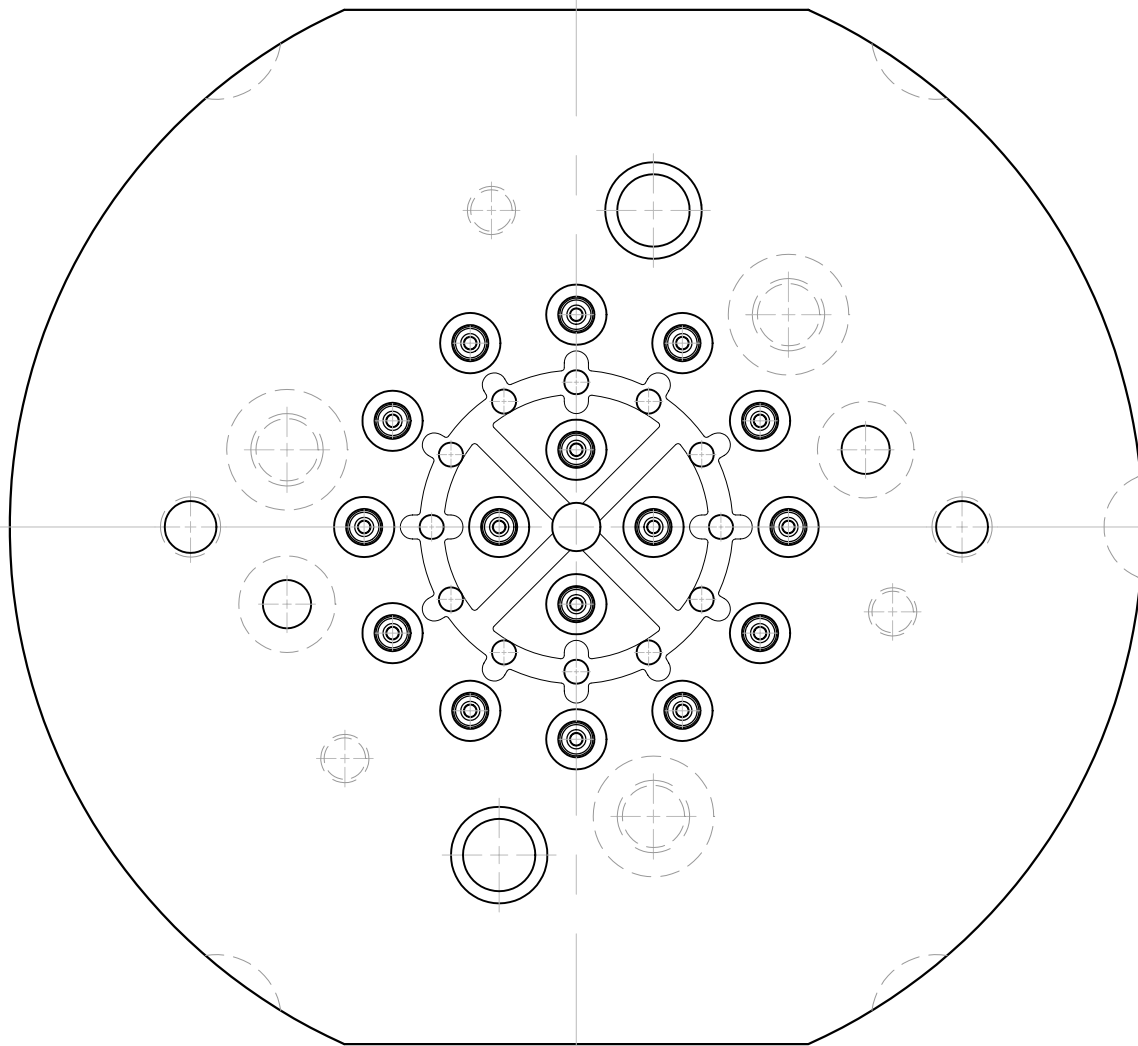
THE STAR PATTERN IS
PERFECTLY BALANCED AND
REDUCES RUNNER VOLUME
WHEN THE CAVITIES ARE
POSITIONED RADially.



COPYRIGHT © PLEASANT PRECISION, INC.®
1991, 1993, 1997, 1998, 1999, 2000 ALL RIGHTS RESERVED

STAR PATTERN
RUNNER LAYOUT

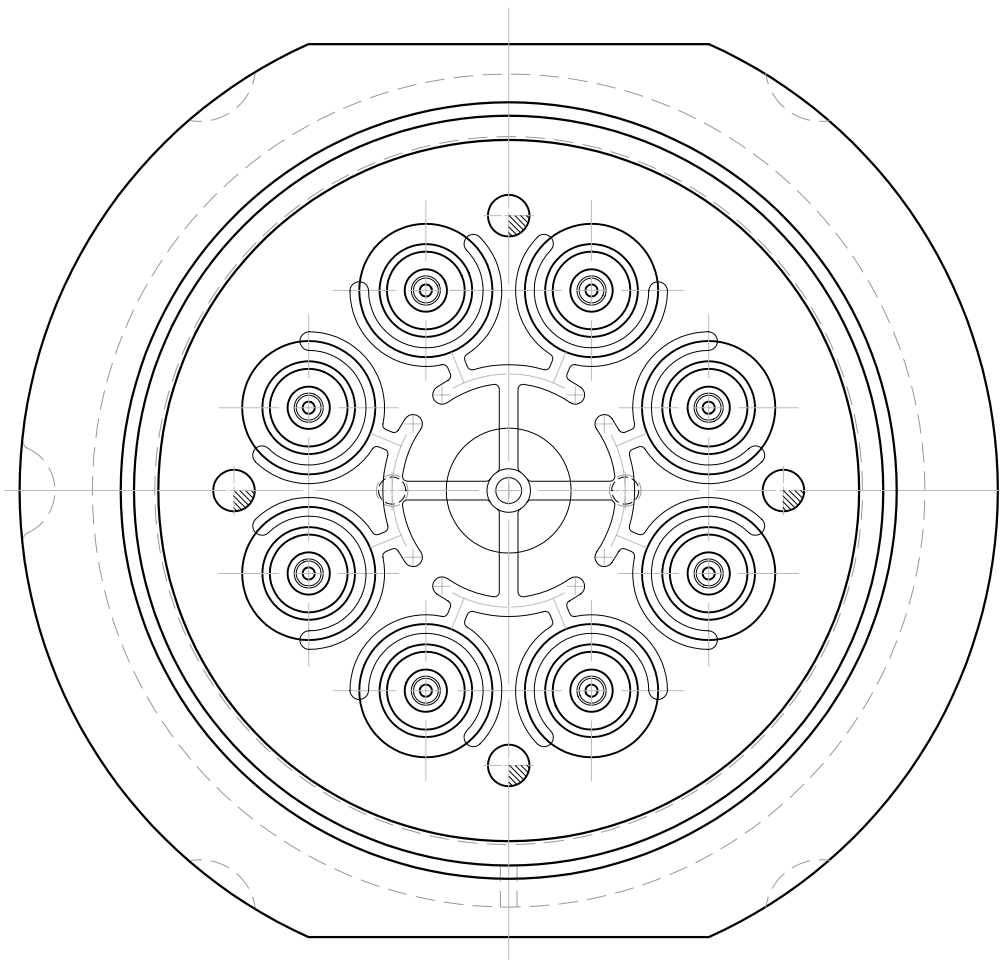
THE SPOKE PATTERN IS A
UNIQUE WAY TO TUCK A FEW
MORE CAVITIES INTO A
ROUND MATE[®] INSERT.



COPYRIGHT © PLEASANT PRECISION, INC.®
1991, 1993, 1997, 1998, 1999, 2000 ALL RIGHTS RESERVED

SPOKE PATTERN
RUNNER LAYOUT

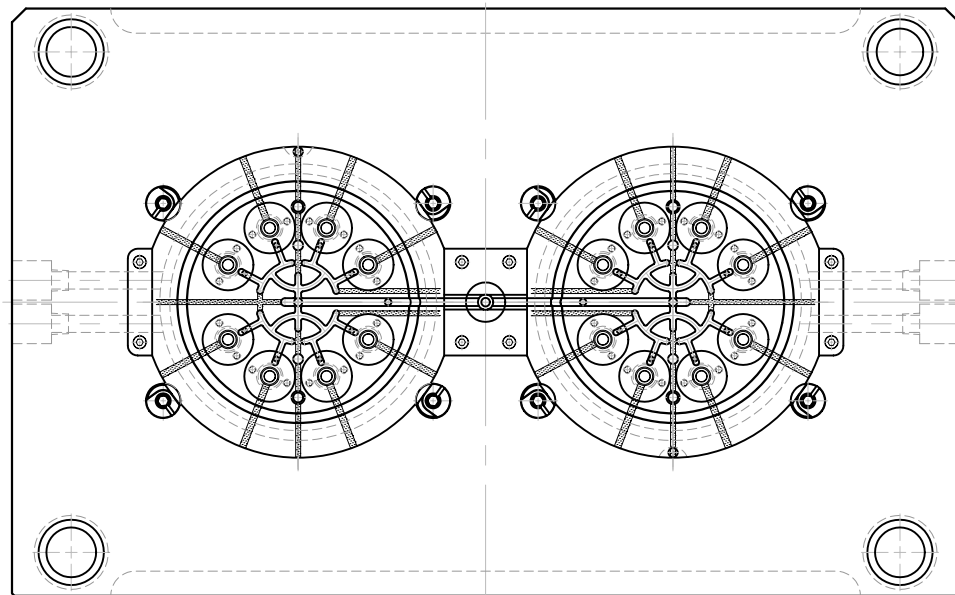
DOUBLE GATED
CAVITY INSERTS



COPYRIGHT © PLEASANT PRECISION, INC.®
1991, 1993, 1997, 1998, 1999, 2000 ALL RIGHTS RESERVED

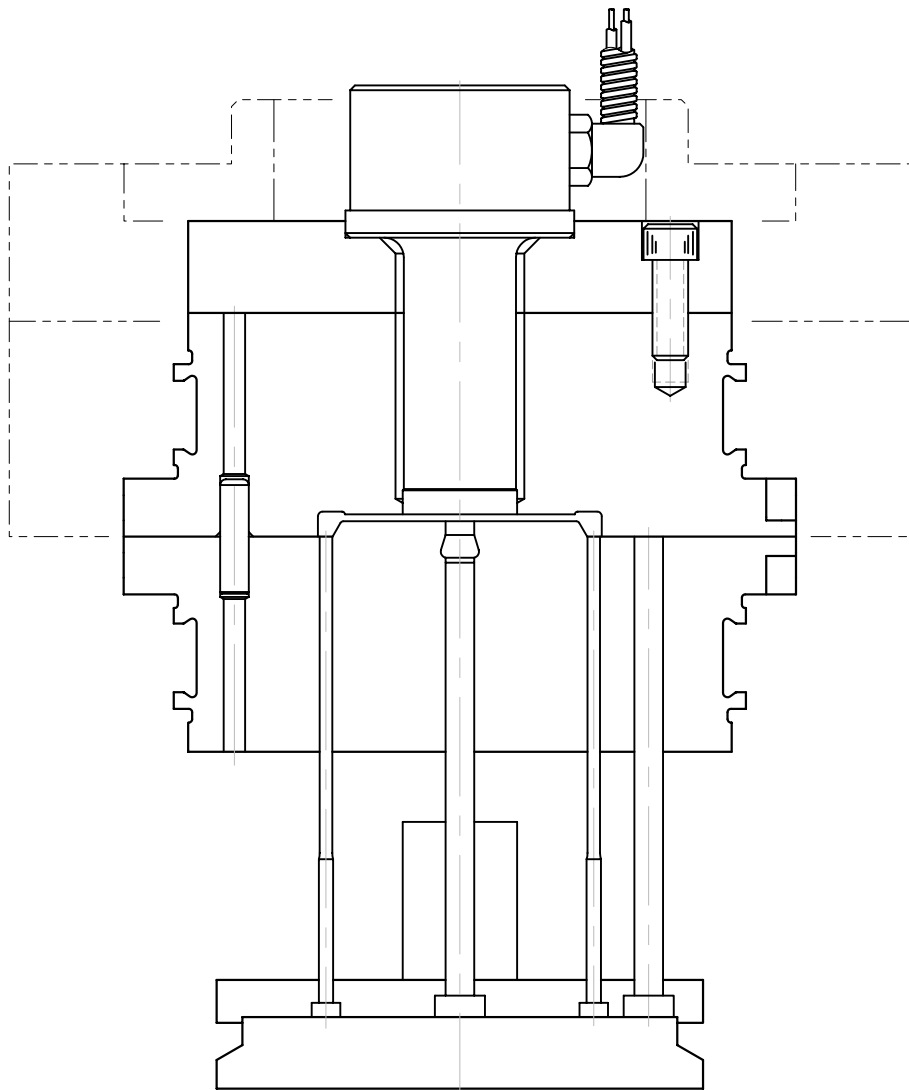
DOUBLE GATED
CAVITY INSERTS

GATING ON MULTI POSITION
MASTER FRAME INSERTS
IS ACCOMPLISHED FROM
THE SIDE OF THE INSERT.



COPYRIGHT © PLEASANT PRECISION, INC.®
1991, 1993, 1997, 1998, 1999, 2000 ALL RIGHTS RESERVED

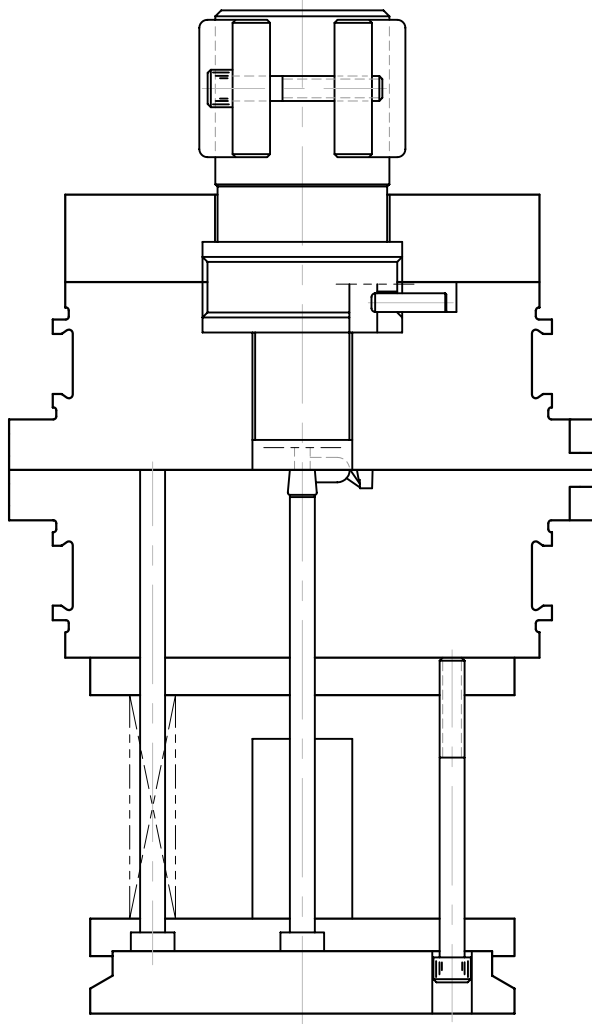
MULTI POSITION
MASTER FRAME RUNNER



COPYRIGHT © PLEASANT PRECISION, INC.®
1991, 1993, 1997, 1998, 1999, 2000 ALL RIGHTS RESERVED

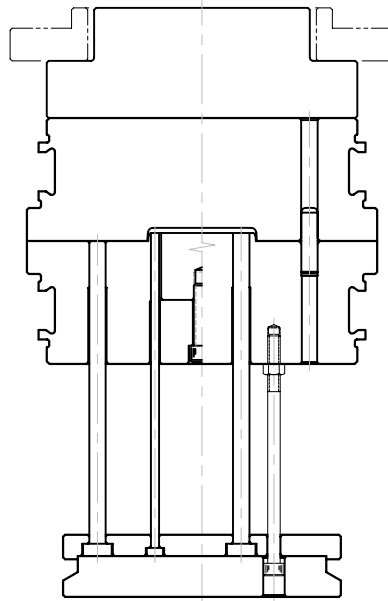
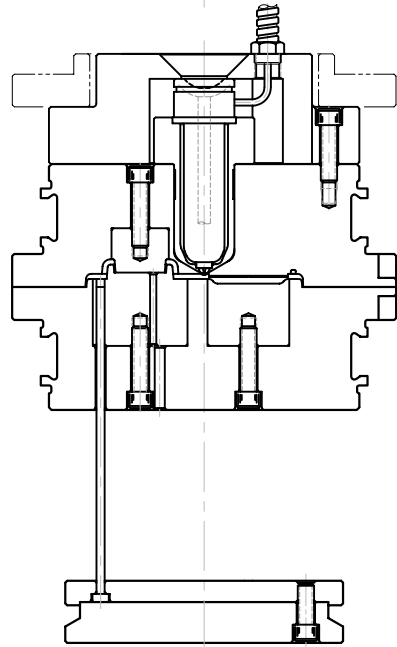
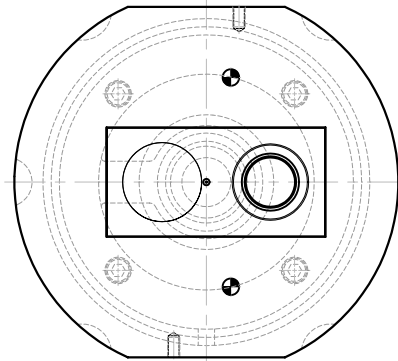
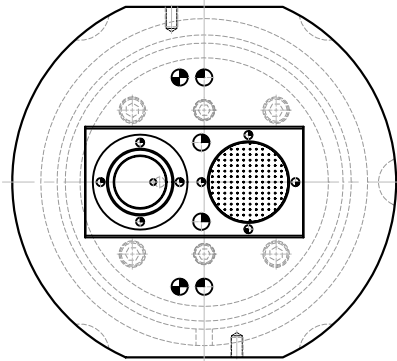
HOT SPRUE BUSHING

6.10



COPYRIGHT © PLEASANT PRECISION, INC.®
1991, 1993, 1997, 1998, 1999, 2000 ALL RIGHTS RESERVED

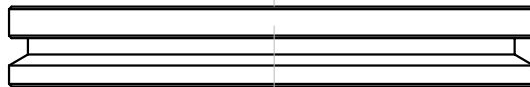
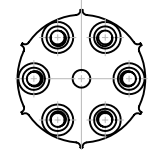
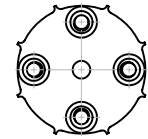
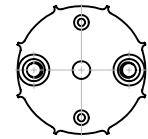
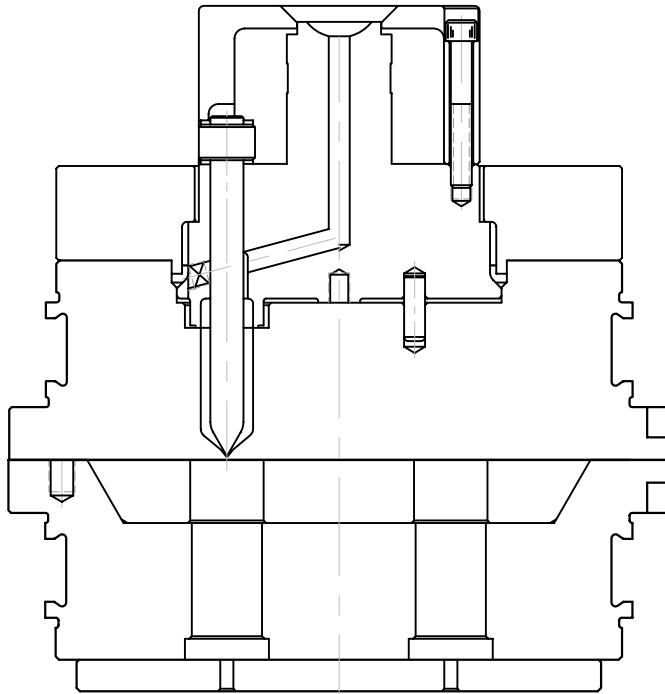
HOT SPRUE BUSHING



COPYRIGHT © PLEASANT PRECISION, INC.®
1991, 1993, 1997, 1998, 1999, 2000 ALL RIGHTS RESERVED

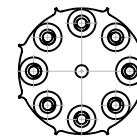
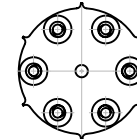
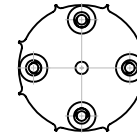
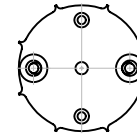
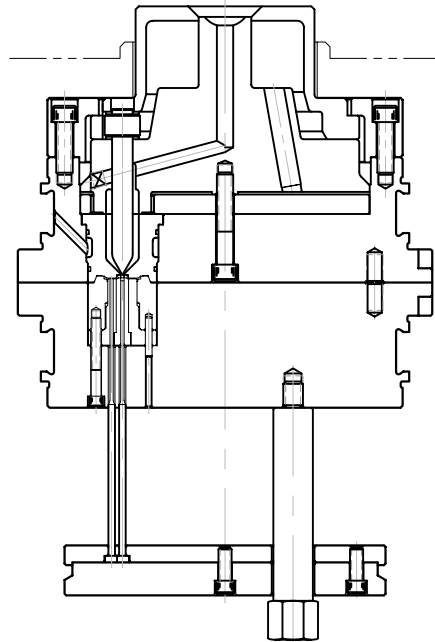
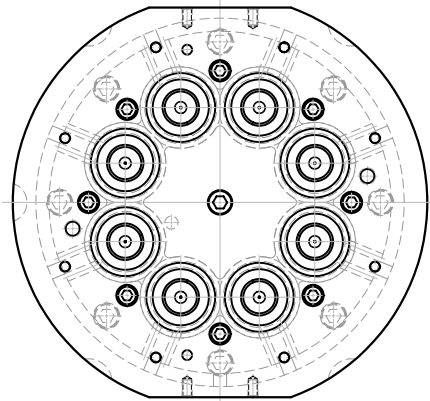
HOT TIP BUSHING

HIGH PRODUCTION
RUNNERLESS MOLDING AT
GREATLY REDUCED COST.
ROUND MATE® IS ESPECIALLY
EFFECTIVE FOR JUST IN
TIME MANUFACTURING.



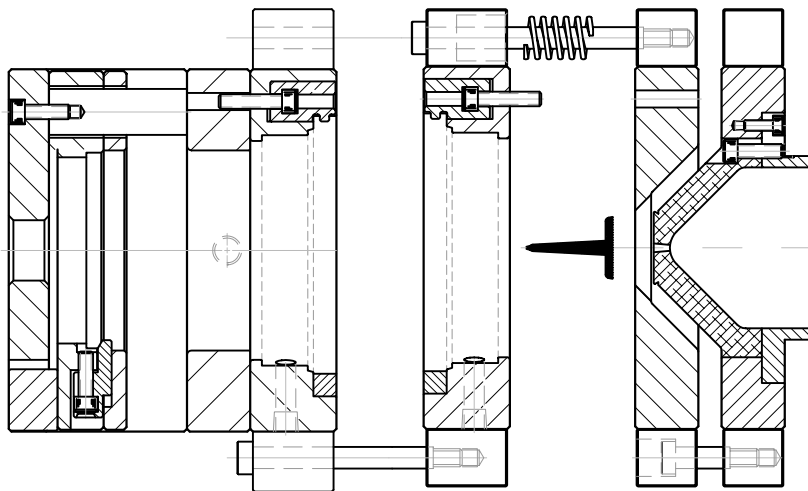
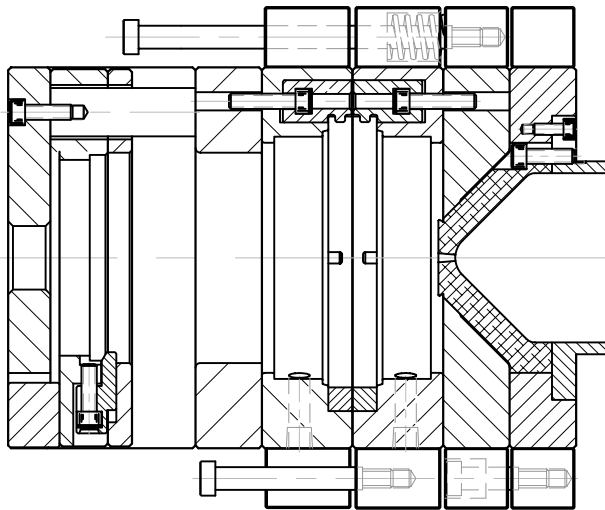
COPYRIGHT © PLEASANT PRECISION, INC.®
1991, 1993, 1997, 1998, 1999, 2000 ALL RIGHTS RESERVED

ROUND MATE® MULTI TIP
HOT MANIFOLD



COPYRIGHT © PLEASANT PRECISION, INC.®
1991, 1993, 1997, 1998, 1999, 2000 ALL RIGHTS RESERVED

ROUND MATE
HOT MANIFOLD



COPYRIGHT © PLEASANT PRECISION, INC.®
1991, 1993, 1997, 1998, 1999, 2000 ALL RIGHTS RESERVED

3 PLATE
EXTENDED NOZZLE DISC